



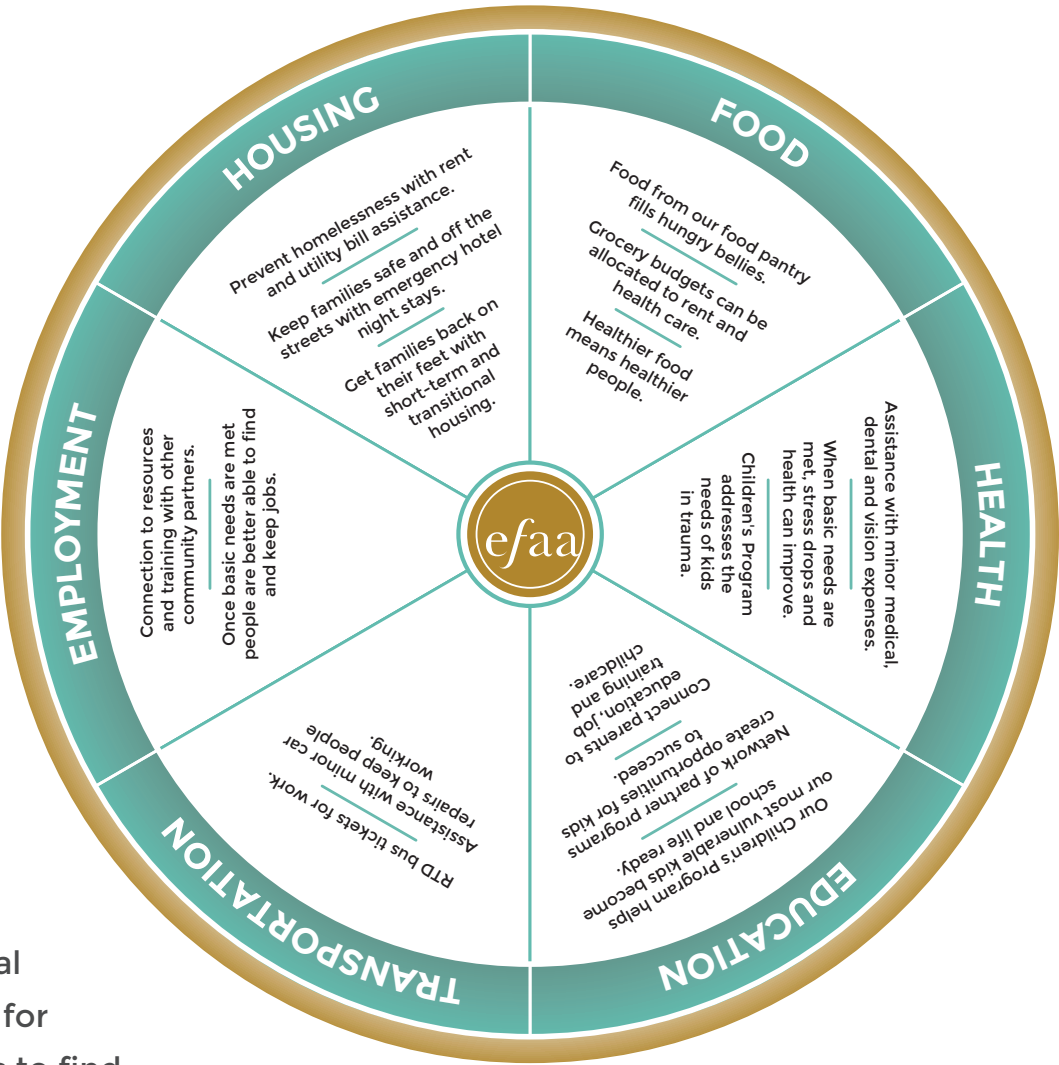
Emergency Family  
Assistance Association  
— Since 1918 —

# EMPOWERING FAMILIES TO THRIVE.

EFAA meets families at the speed of life. When families thrive we are all stronger as a community.

The essential elements that keep a household working are the same for everyone. We all need the spokes of our wheel to be strong, but during moments of insecurity one or more of these spokes can break, and people who have nowhere else to turn can fall into crisis. This could be due to a short-term shock, like job loss or illness, or the result of chronic low income. EFAA empowers families in crisis to build a brighter future by helping them move through life’s moments of insecurity.

EFAA works with each family to help them meet critical immediate needs and access the resources they need for long-term success. Our goal is for low-income families to find stability and elevate their life situation for themselves and their children. EFAA helps families navigate and connect to resources, and provides critical life management guidance, like budgeting and planning for the future.



## WHAT OUR CLIENTS SAY

*“I want to thank EFAA for your assistance in getting my daughter and me a place to call home. I’m now off public assistance and paying for everything on my own. It is such an empowering feeling. I am forever grateful.”*

*“Because of EFAA’s food bank, I was able to spend my budget on things that would propel us forward instead of just barely surviving. I’m now able to go back to school.”*

## EVERYONE HAS A PLAN. THEN LIFE HAPPENS.

There’s a rapidly growing problem in our community – one that is often invisible: poverty and family homelessness.

- » Nearly 50% of Boulder County’s homeless residents are families with children.
- » Housing costs skyrocket, yet pay for low-wage jobs is stagnant.
- » One third of Boulder County children live in poverty.



## PREVENTION AND RESILIENCE

EFAA works to prevent families in need from falling further into crisis, and helps families deep in crisis build back up and out to a better life situation. By removing barriers to success and providing more opportunities for resilience, EFAA gets families back on their feet faster, and helps avert the factors that drive intergenerational poverty.

Boulder County ranks 44th out of 64 Colorado counties in charitable giving relative to income. Let’s put our resources into action to close this gap and make our community even stronger.

**Donate. Volunteer. Engage your employer. Start a campaign. Tell a friend.**

303-442-3042  
[www.efaa.org](http://www.efaa.org)