

# BOULDER COUNTY COMMUNITY WELLBEING DASHBOARD 2023

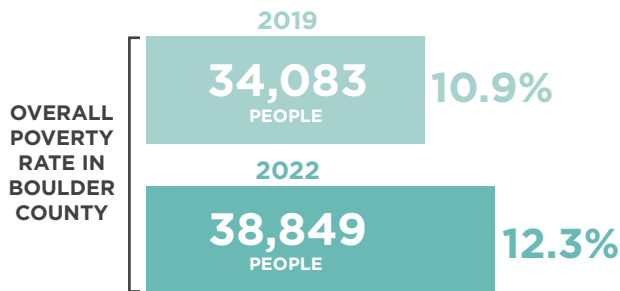
Compiled by  
Emergency  
Family Assistance  
Association  
(EFAA)



## ARE WE MOVING TOWARDS A COMMUNITY IN WHICH EVERYONE CAN THRIVE?

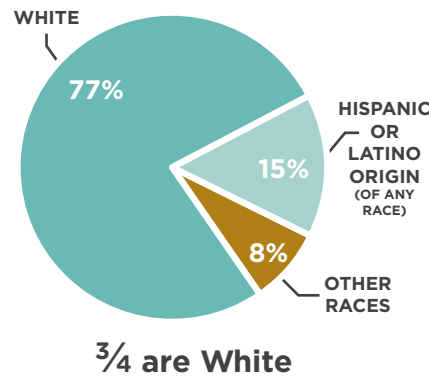
### POVERTY | Poverty is growing in Boulder County compared to pre-pandemic levels

The poverty rate in Boulder County **INCREASED 13%** compared to pre-pandemic levels



Almost **5,000 MORE PEOPLE** are living in poverty in 2022 compared to 2019

People living in poverty in Boulder County



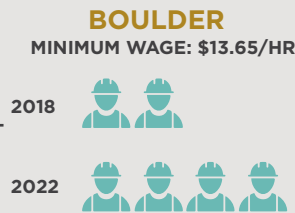
The gap in the **POVERTY RATE** of White and Latino residents is **NARROWING**

	2019	2022
White	10.2%	12.1%
Latino	13.1%	12.8%

### EMPLOYMENT & WAGES

1/4 of households in Boulder County don't earn enough to make ends meet without public or private support

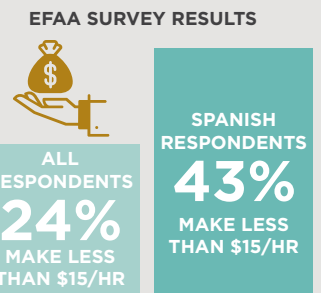
A family of 2 adults, 1 preschooler, and 1 school-aged child living in Boulder County would need **4 FULL TIME MINIMUM WAGE JOBS** to meet their needs, **TWICE** compared to pre-COVID



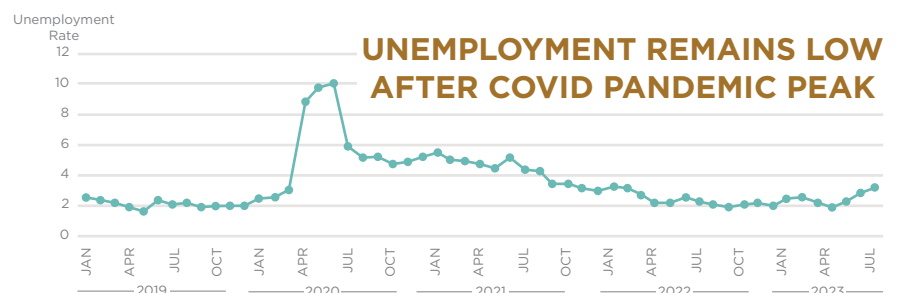
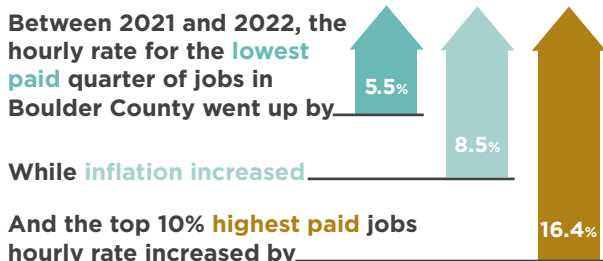
Because of the higher minimum wage and the lower cost of living, that same family in Denver would need to work **LESS THAN 3 FULL TIME MINIMUM WAGE JOBS** to make ends meet



**\$15,600**  
AVERAGE HOUSEHOLD INCOME OF EFAA PARTICIPANTS RECEIVING FINANCIAL ASSISTANCE TO COVER THEIR BASIC NEEDS



A large percentage of EFAA participants would benefit from an **increase in the local minimum wage**



DISCLAIMER: All data presented on this dashboard corresponds to latest data point available as of September 2023.

# BOULDER COUNTY COMMUNITY WELLBEING DASHBOARD 2023

Compiled by  
Emergency  
Family Assistance  
Association  
(EFAA)



## CHILDREN'S WELLBEING

After the pandemic, child poverty & family homelessness worsened



**5,300**

**KIDS LIVE IN POVERTY**  
in Boulder County

	2019	2022
<b>BOULDER COUNTY</b>	<b>7.9%</b>	<b>9.4%</b>
<b>CITY OF BOULDER</b>	<b>6.9%</b>	<b>14.7%</b>
<b>COLORADO</b>	<b>10.9%</b>	<b>11.1%</b>



Child poverty went up in Boulder County and in particular the City of Boulder, compared to Colorado as a whole

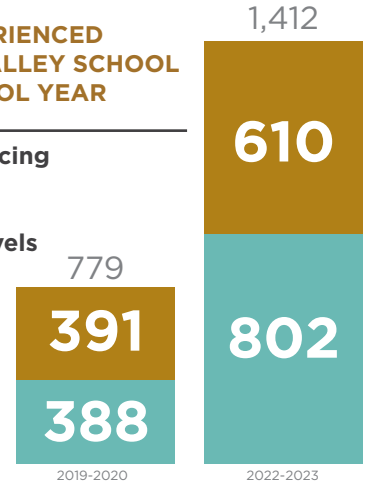
## OVER 800

**SCHOOL-AGED CHILDREN EXPERIENCED HOMELESSNESS IN BOULDER VALLEY SCHOOL DISTRICT OVER THE PAST SCHOOL YEAR**

The number of students experiencing homelessness in Boulder Valley and St Vrain School Districts has **DOUBLED** from pre-pandemic levels



ST VRAIN SCHOOL DISTRICTS  
BOULDER VALLEY SCHOOL DISTRICTS



## ACCESSING FOOD

Food insecurity is up 14% from the previous year: **OVER 32,000 PEOPLE** in Boulder County lack access, at times, to enough food for an active, healthy life

**37%**

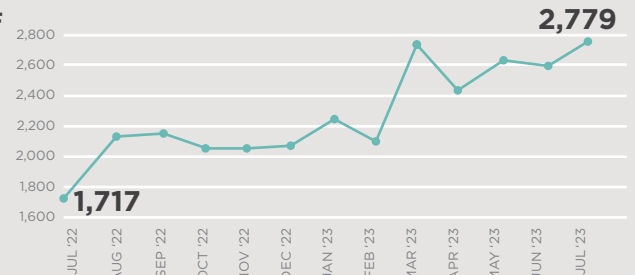
of food insecure people in Boulder County **EARN TOO MUCH** to qualify for major federal nutrition assistance programs (SNAP, WIC, etc)

In 2022, food prices increased faster than overall inflation

**12% INCREASE IN FOOD PRICES**

**8% INCREASE IN INFLATION**

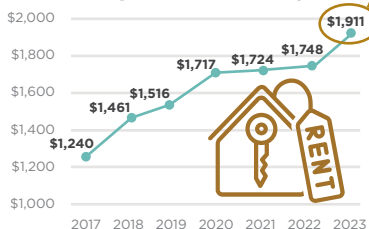
THE NUMBER OF HOUSEHOLDS VISITING EFAA'S FOOD BANK EACH MONTH **INCREASED 62% OVER THE LAST YEAR**



## HOUSING STABILITY

Housing in Boulder is increasingly unaffordable, and more people are losing their housing

The market rate for a two-bedroom rental in Boulder County increased **9%** compared to last year



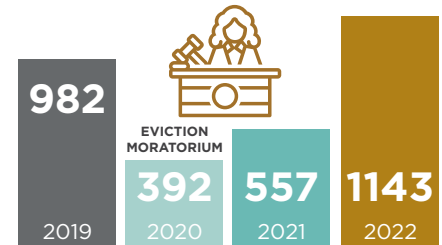
**\$1,911** fair market rent for a 2-bedroom in Boulder County

Hourly wage needed to afford to rent 2bdr home in Boulder without paying more than 30% of income in rent:



## EVICCTIONS MORE THAN DOUBLED

between 2021 and 2022 after a temporary reduction in 2020 due to supports put in place during the pandemic (moratoriums and rental assistance)



NEW COURT EVICTION FILINGS (DISTRICT 20 - BOULDER COUNTY)

EFAA is building a community where all of our neighbors can meet their basic needs and strengthen their financial stability to springboard themselves and their children out of poverty. For over 100 years, EFAA has served as Boulder County's safety net, working in collaboration with volunteers, donors, partners, and participants. We help our community have access to food, housing, and other resources to move toward financial stability and resilience. When families thrive, our community is stronger.

**FEELING INSPIRED?  
WANT TO LEARN MORE?  
GET INVOLVED.** →

[www.efaa.org](http://www.efaa.org)  
**303-442-3042**  
[info@efaa.org](mailto:info@efaa.org)